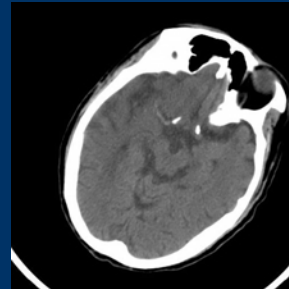


Emergency Radiology

新光急診 張志華
102.04.03



- Acute left hemiparesis
- Dense MCA sign

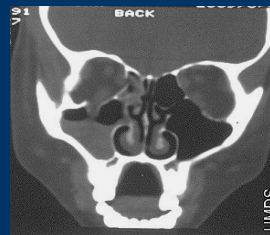


- Left eye struck by baseball
- Blow-out fracture
- Teardrop sign

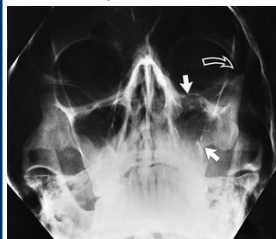


Blow out fracture

- Plain films not very helpful; indirect signs:
 - Air-fluid level in sinus
 - Opacified sinus
- Consider thin-section CT



- Hit by someone
- Left facial pain and diplopia
- Left zygomatic fracture (tripod fracture)

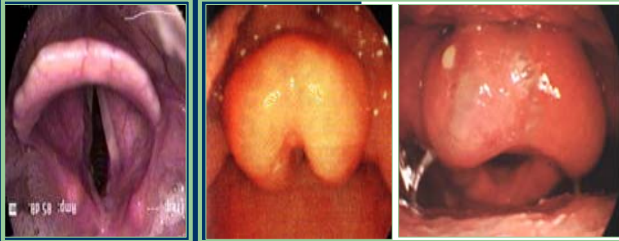


- Sorethroat, fever, drooling

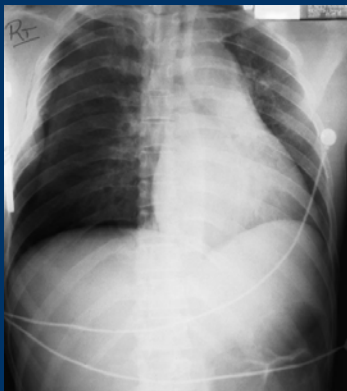


Epiglottitis

Normal



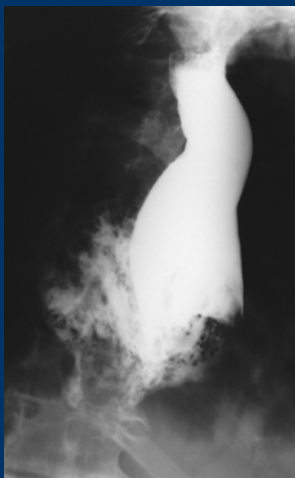
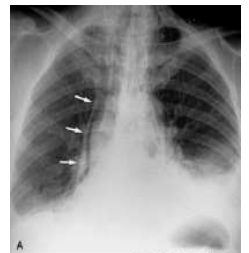
Chest



- MBA → right-sided blunt chest trauma
- Pneumothorax with mediastinal shift
- Tension PTX?



- Chest pain followed by shock after severe vomiting
- Pneumomediastinum



- Acute severe chest pain following violent retching and vomiting
- Boerhaave's Syndrome



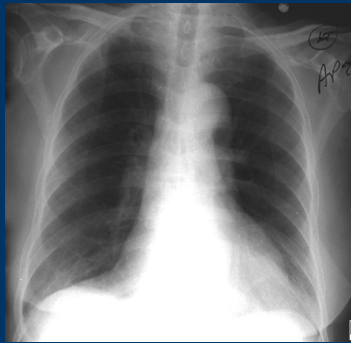
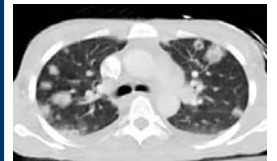
- Pneumopericardium



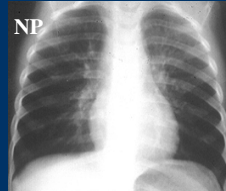
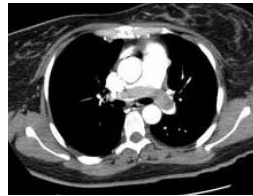
- Pericardial tamponade



- Prolonged fever
- Septic pulmonary embolism
- IV drug abuser
- Heart murmur

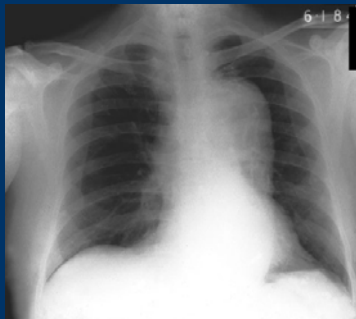


- 59Y woman SOB + chest pain on deep inspiration
- Immobilized x 2 wk due to fracture
- Pulmonary embolism

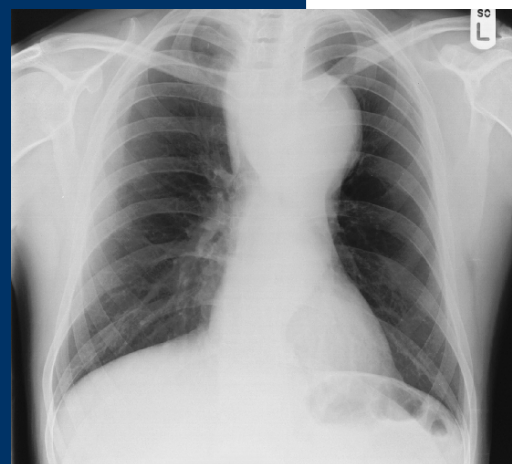
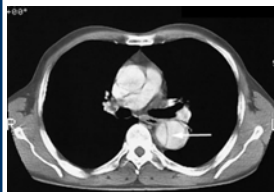


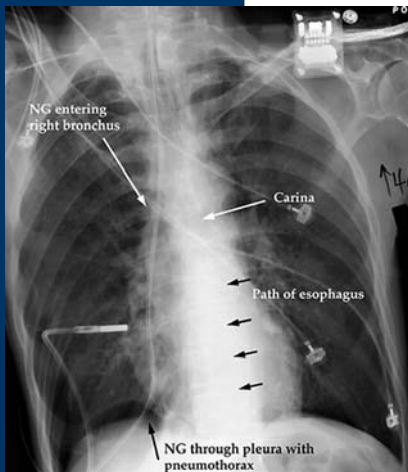
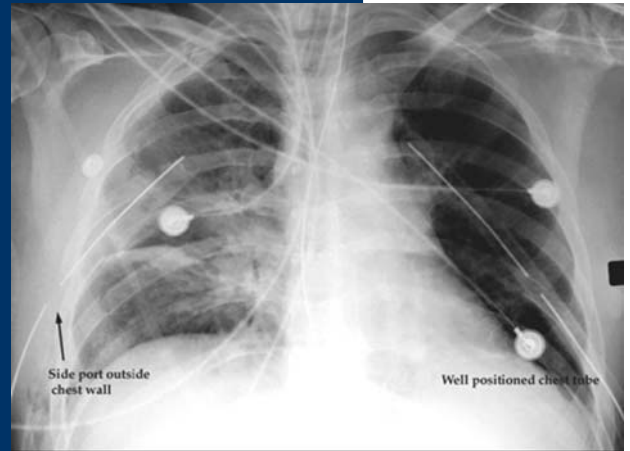
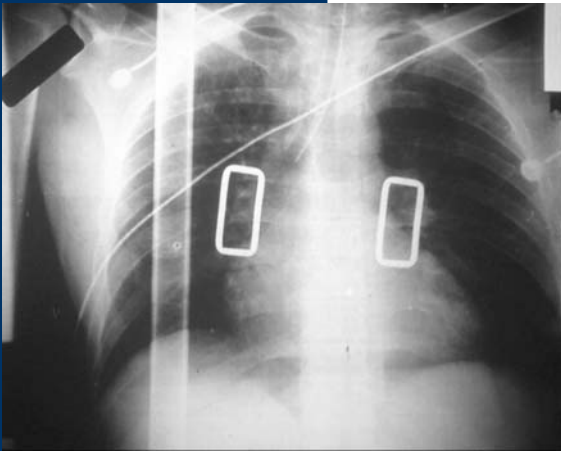
5Y boy
Acute cough and wheezing without fever

**FB in lower airway
(Obstructive emphysema)**



- 60-year-old man
- Sharp, intractable chest pain
- Asymmetrical peripheral pulses
- Aortic dissection





- One lung intubation
- CVP
- NG
- ECG monitors
- PCN catheter
- Staghorn stone
- Pneumonia (ARDS)
- Ileus

Thank You